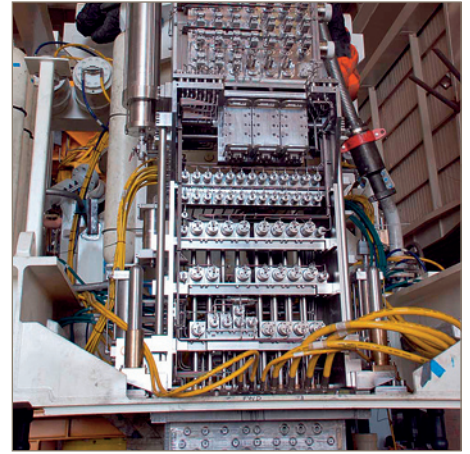


# 2390N BOP stack hoses MUX Hot lines



For those applications where collapse resistance is not an issue, Parker 2390N hose is an economical stack hose that offers a rugged construction and is ideal for pressure testing, portable hydraulic tools and for offshore hydraulic systems.

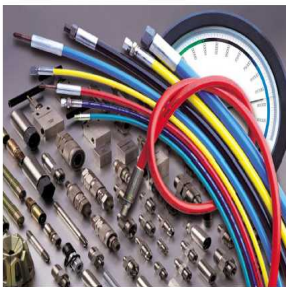
Parker's 2390N is good suit as 1" Hot line in continuous lengths up to 3000 m (9800 ft) for MUX System applications. These hoses are made from methanol washed PA11 core tube reinforced with layers of a high-strength wire and jacked with a weather resistant thermoplastic cover.

Crimp your own assembly: BOP hoses are available as bulk hose on a drum and Crimp on a Parkrimp system or on a free adjustable crimper.



## Contact information:

**polyflex®**  
**Hose Products**  
Ultra High Pressure Thermoplastic Hose



**anything Parker**  
**Possible.**

## Product Features:

- Internal Diameter ½", ¾" and 1"
- Resistance to methanol, glycol and water based fluids
- Continuous lengths up to 3000m (9,800 ft)
- Cover: Polyurethane in Blue, green, yellow, black colours
- COLORGARD, dual colour safety feature with extra thick cover for superior abrasion resistance.
- Temperature 100 °C , Max 70 °C safety for water or methanol based fluids
- Working Pressures up to 12,000 psi (830 bar)



ENGINEERING YOUR SUCCESS.

# 2390N – BOP Hoses/MUX Hot Lines

## MAIN FEATURES:

- Extremely Low Volumetric Expansion
- Low dimensional change under pressure
- Smooth bore for low pressure drop



## APPLICATIONS:

- Low volumetric expansion hose. Used for subsea hydraulic controls and as long length hot-line hose for Subsea BOP systems.

## CONSTRUCTION:

**Core tube** : Polyamide  
**Pressure reinforcement** : High strength wire  
**Cover** : Polyurethane  
**Colour** : V12: blue, V13: green, V16: yellow

## TEMPERATURE RANGE:

SF 4:1: -40°C up to +100°C, max. 70°C for water or methanol based fluids.  
 SF 2.5:1: -40°C up to +60°C

## SIZES AND DATA:

#										
	size DN	inch mm	inch mm	psi * MPa	psi ** MPa	psi MPa	inch mm	lbs/ft kg/m	ft m	
2390N-04Vxx	-04 6	1/4 6.4	0.52 13.3	12,000 83.0	7,500 52.0	30,000 206.9	6.29 160.0	0.17 0.25	11,400 3,500	9X
2390N-08Vxx	-08 12	1/2 12.8	0.83 21.0	9,570 66.0	6,020 41.5	24,080 166.0	7.87 200.0	0.36 0.54	11,400 3,500	9X
2390N-16Vxx	-16 25	1 25.0	1.38 35.1	6,530 45.0	4,060 28.0	16,240 112.0	13.39 340.0	0.91 1.35	11,400 3,500	9X

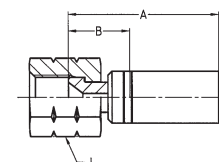
## NOTES:

\* Max. working pressure with 2.5:1 safety factor; \*\* Max. working pressure with 4:1 safety factor  
 Additional technical information see Catalogue 4465, chapter "J".

## 9X Subsea – JIC female swivel fitting (Parkrimp II Modular)

## MATERIAL:

Stainless Steel (AISI 316); \*: Welded SubSea fitting



#							
	size DN	inch mm		inch mm	inch mm	inch mm	psi MPa
E206JCC3*	-04 6	1/4 6.4	7/16 - 20UNF	1.76 44.6	0.76 19.2	0.63 16	12,000 83.0
E206JEC3*	-04 6	1/4 6.4	9/16 - 18UNF	1.81 46.0	0.81 20.6	0.75 19	12,000 83.0
E213JFC4*	-08 12	1/2 12.7	3/4 - 16UNF	3.35 85.0	1.61 41.0	0.945 24	9,570 66.0
E225JIC3*	-16 25	1 25.4	1 5/16 - 12UNF	4.30 109.0	2.10 53.0	1.614 41	6,530 45.0

We reserve the right to make technical changes. The data contained correspond to the current status at the time of printing.